

LIFT-RITE®

**OWNER'S MANUAL, OPERATING INSTRUCTIONS MANUAL,
and REPLACEMENT PARTS MANUAL**

Altra Hand Pallet Truck



This publication, 1247409C, applies to the Lift-Rite Hand Pallet Trucks, and to all subsequent releases of this product until otherwise indicated in new editions. Changes occur periodically to the information in this publication.

To order additional copies of this manual, part number 1247409C, contact your local authorized Lift-Rite Sales and Service Center.

If you need assistance with your lift truck, contact your local authorized Lift-Rite Sales and Service Center.

For more information please visit www.liftright.com

©2022

TABLE OF CONTENTS

| | |
|---|----|
| BEFORE YOU BEGIN | 3 |
| DELIVERY INSPECTION | 3 |
| OPERATING INSTRUCTIONS | 3 |
| SAFETY PROCEDURES | 4 |
| DAILY INSPECTION | 4 |
| TO ATTACH HANDLE TO PUMP UNIT | 5 |
| TO ADJUST RELEASE DEVICE | 5 |
| MAINTENANCE | 6 |
| TROUBLESHOOTING | 7 |
| LIST OF ASSEMBLIES | 8 |
| HANDLE ASSEMBLY, TYPE A AND TYPE B | 9 |
| HANDLE ASSEMBLY, TYPE D | 11 |
| FORK FRAME ASSEMBLY | 13 |
| PUMP UNIT ASSEMBLY | 15 |
| FOOT BRAKE (OPTIONAL) | 18 |
| RECYCLE YOUR OLD LIFT-RITE PARTS | 19 |
| HAND PALLET TRUCK WARRANTY | 20 |
| SELECTED OSHA REGULATIONS FOR LIFT TRUCKS | 21 |

BEFORE YOU BEGIN

Always follow your facility's rules regarding wearing Personal Protective Equipment such as safety shoes and protective glasses whenever operating, working with, or assembling or dismantling hand pallet trucks.

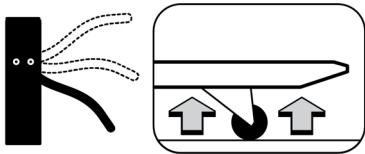
DELIVERY INSPECTION

Visually inspect hand pallet truck frame components and hydraulic unit for damage during shipment by carrier. If damage is evident, notify delivering carrier immediately and file necessary claims. Test the hand pallet truck pump for proper operation.

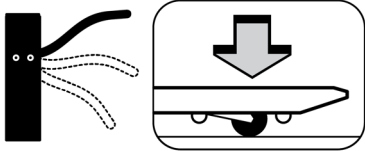
If the hydraulic pump does not respond to movement of the handle, an air lock may have developed during shipping. To remedy this, go to the user friendly TROUBLESHOOTING guide in this manual.

OPERATING INSTRUCTIONS

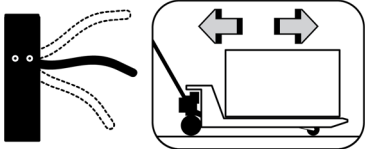
(Read and understand prior to using this product)



To raise the load, push down on the fingertip control. Pump the handle to raise the load from the floor.



To lower the load, pull up on the fingertip control.



For free handle movement, place the fingertip control in the neutral position.

NOTE: The neutral position disengages the pump from the lifting mechanism. This frees the handle, which makes pulling loads easier. In addition, the pump is not subject to shock pressures while the truck is in motion.

SAFETY PROCEDURES

(Read and understand prior to using this product)

- Read and obey all labels on this product. If you have any questions about these, ask your supervisor.
- Do not operate this hand pallet truck unless you are authorized and trained to do so.
- Never overload your hand pallet truck. Stay within its rated capacity.
- Do not operate this truck if damaged or not in proper working order.
- Distribute the load evenly on the forks. Do not concentrate loads at one point or load one fork more than the other.
- When the load impairs visibility, the hand pallet lift truck should be pulled and not pushed.
- Always look where you are operating. Keep a clear view.
- Only handle loads on flat level surfaces. Do not use a loaded truck on inclines or declines.
- Never carry passengers.
- Never put your feet, hands, or any other body part under the frame assembly.
- Always yield right of way to pedestrians.
- Do not allow your hand pallet truck to drop from one level to another. Even a drop of 1 in. (25 mm) more than doubles the effective load momentarily and results in a loading that can bend or break components.
- Move loads only with the hand pallet truck in its lowest position.
- Always make sure that the load is stable before moving to eliminate the opportunity for load shift.
- Use extreme care when rounding corners. Too fast a speed could cause a hand pallet lift truck to tip. If loaded, the load could shift and fall.
- When not in use, fully lower the forks.

DAILY INSPECTION

At the start of your shift, check the items listed below. Report any malfunction or unsafe conditions to your supervisor. Do not use this product until it is repaired.

| CHECK POINTS | Steering | Hydraulic System | Wheels | Chassis/ Handle | Lifting/ Lowering | Labels |
|--------------|---------------------|--|---|------------------------------------|--------------------|-----------------------|
| ACTION | Check full rotation | Check for excessive oil on exterior and check for function | Check for wear, damage, and remove debris | Check for damage and remove debris | Check for function | Check for readability |

TO ATTACH HANDLE TO PUMP UNIT

1. Remove 3 bolts (D611) from the handle bracket (D151).
2. Set handle (D610A, D610B, or D610AS) on the bracket (D151), notice to allow the chain (D612) and the adjusting bolts (D614) assembly to pass through the hole in the center of the bracket (D151) and shaft (D153).
3. Insert the 3 bolts (D611) through the handle into the bracket (D151), then tighten them securely.
4. Raise the lever plate (D132) and insert the adjusting bolt (D614) into the front slot, keeping the adjusting nut (D615) on the underside of the lever plate (D132).

TO ADJUST RELEASE DEVICE

On the draw-bar of this pallet truck, you can find the control handle (D608 or D608S) which can be adjusted in three positions:

| | |
|-------|--|
| Raise | Handle down |
| Drive | Handle in center position |
| Lower | Handle up, the lever moves back to the drive position when released. |

If however they have been changed, you can adjust according to the following steps:

1. If the forks elevate while pumping in the **DRIVE** position, turn the adjusting nut (D615) on the adjusting bolt (D614) or adjusting screw (D133) clockwise until pumping action does not raise the forks and the **DRIVE** position functions properly.
2. If the forks lower while pumping in the **DRIVE** position, turn the nut (D615) or adjusting screw (D133) counter-clockwise until the forks do not lower.
3. If the forks do not lower when the control handle (D608 or D608S) is in the **LOWER** position, turn the nut (D615) or adjusting screw (D133) clockwise until raising the control handle (D608 or D608S) lowers the forks. Then check the **DRIVE** position according to steps 1 and 2 to be sure the nut (D615) or adjusting screw (D133) is in the proper position.
4. If the forks do not elevate while pumping in the **RAISE** position, turn the nut (D615) or adjusting screw (D133) counter-clockwise until the forks elevate while pumping in the **RAISE** position. Then check the **LOWER** and **DRIVE** position according to steps 1, 2, and 3.

MAINTENANCE

Your pallet truck is largely maintenance-free.

Oil

Please check the oil level every six months. The oil capacity is about 0.3 liters. Use the hydraulic type oil according to temperature scale below.

| Temperature | Oil |
|--------------------------------|----------------------|
| -4°F to 104°F (-20°C to +40°C) | L-HV46 Hydraulic Oil |

How to Expel Air from the Pump Unit

The air may come into the hydraulic oil because of transportation or pump in upset position. It can cause the forks to not elevate while pumping in the **RAISE** position. The air may escape in the following way: place the control handle (D608 or D608S) in the **LOWER** position, then move the handle (D610A, D610B, or D610AS) up and down several times.

Lubrication

Use motor oil or grease to lubricate all movable parts.

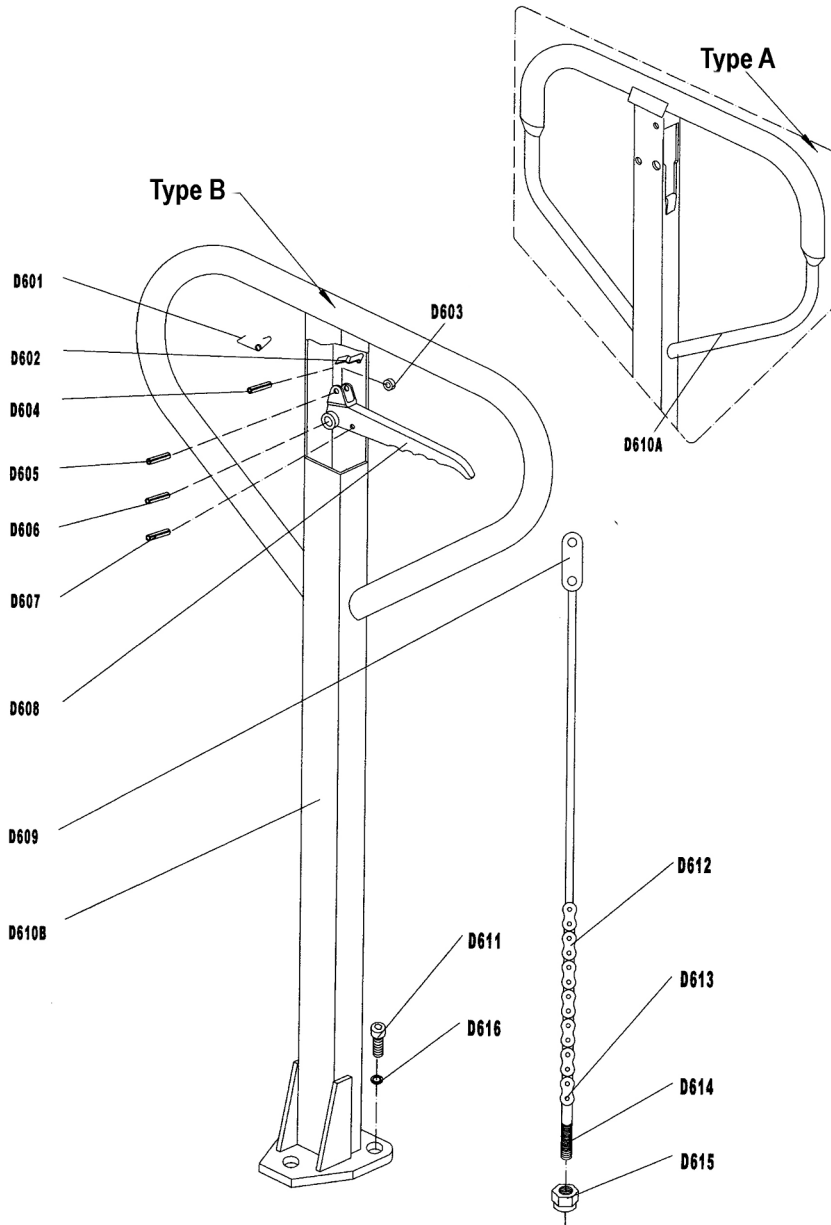
TROUBLESHOOTING

| CONDITION | CAUSE | ACTION |
|---|--|--|
| The forks can not be lifted up to the maximum height. | The hydraulic oil is not enough. | Fill the oil. |
| The forks can not be lifted up. | Without hydraulic oil. | Fill the oil. |
| | The oil has impurities. | Change the oil. |
| | The nut (D615) is too high or the screw (D133) is too close, keeping the pump valve open. | Adjust the nut (D615) or the screw (D133). (See To Adjust Release Device). |
| | Air comes into the hydraulic oil. | Remove the air. (See How to Expel Air from the Pump Unit). |
| The forks can not be lowered. | The piston rod (D147) or pump body is deformed resulting from partial load slanting to one side or over-loading. | Replace the piston rod (D147) or pump body. |
| | The forks were kept in the high position for a long time with the piston rod bare causing rust and jamming of the rod. | Keep the forks in the lowest position, if not using, and lubricate the rod when necessary. |
| | The adjusting nut (D615) or the screw (D133) is not in the correct position. | Adjust the nut (D615) or the screw (D133). (See To Adjust Release Device). |
| Leaks | Sealing parts worn or damaged. | Replace worn or damaged sealing part. |
| | Some part cracked or worn. | Replace cracked or worn part. |
| The forks lower without the release valve working. | The impurities in the oil cause the release valve to be unable to close tight. | Replace with new oil. |
| | Some parts of hydraulic system are cracked or bored. | Inspect and replace the waste parts. |
| | Air comes into the oil. | Remove the air. (See How to Expel Air from the Pump Unit). |
| | Sealing parts worn or damaged. | Replace worn or damaged sealing part. |
| | The adjusting nut (D615) or the screw (D133) is not in the correct position. | Adjusting the nut (D615) or the screw (D133). (See To Adjust Release Device). |

LIST OF ASSEMBLIES

| Parts No. | Description | List of Assemblies | Qty |
|-----------|------------------------------------|--|-----|
| DF20-01 | Handle Assembly | D601, D602, D603, D605, D608, D609, D610B, D612, D613, D614, D615 | 1 |
| DF20-02 | Control Handle Kit | D603, D605, D608 | 1 |
| DF20-03 | Chain Assembly | D609, D612, D613, D614, D615 | 1 |
| DF20-04 | Load Roller Assembly (Single Type) | D220, D229 | 2 |
| DF20-05 | Load Roller Assembly (Tandem Type) | D220, D221 | 4 |
| DF20-06 | Steering Wheel Assembly | D116, D127 | 2 |
| DF20-07 | Pump Unit Seal Kit | D104, D105, D107B, D111B, D131, D135, D141, D143, D144, D148, D157 | 1 |
| DF20-08 | Bracket Assembly | D150, D151, D152, D154, D156 | 1 |
| DF20-09 | Pump Assembly | D101, D102, D103, D104, D105, D106B, D107B, D108, D109, D110B, D111B, D112, D113, D129, D130, D131, D132, D133, D134, D135, D136, D137, D139, D140, D141, D142, D143, D144, D145, D146, D147, D148, D149, D150, D151, D152, D153, D154, D155, D156, D157, D158, D159B, D160B | 1 |

HANDLE ASSEMBLY, TYPE A AND TYPE B

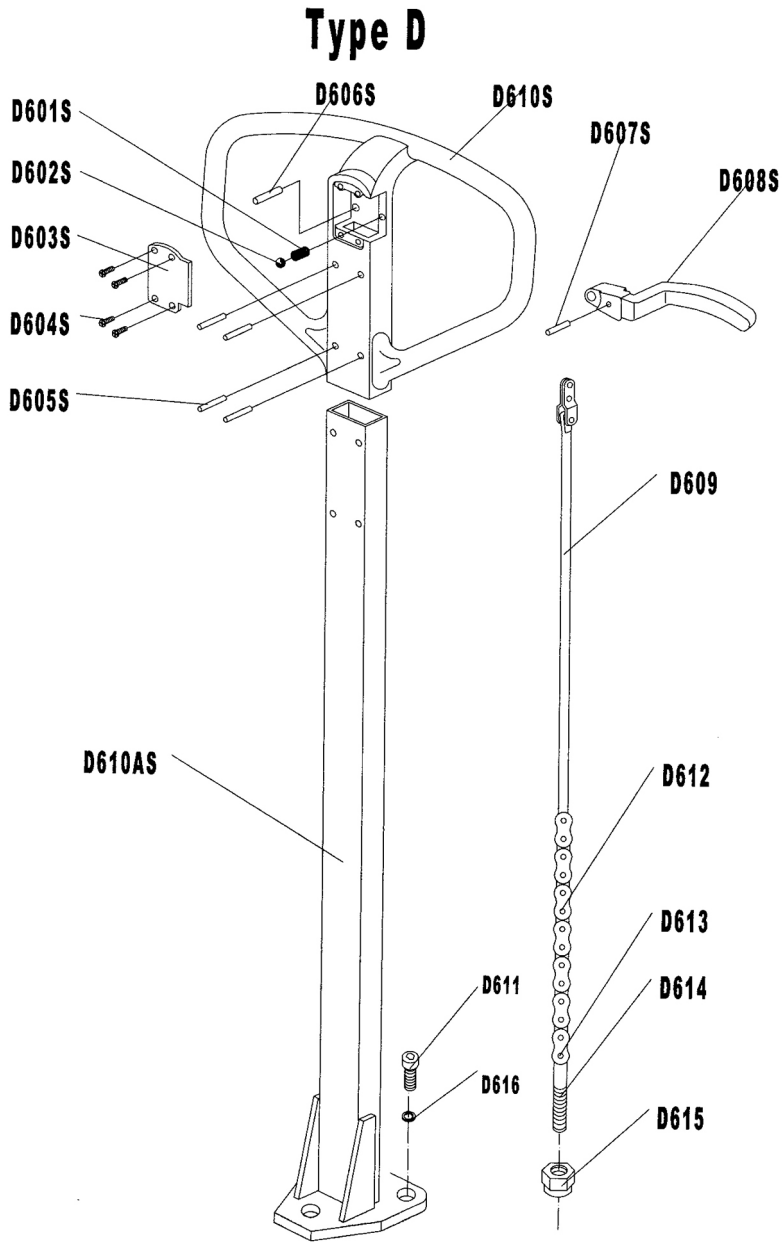


HANDLE ASSEMBLY, TYPE A AND TYPE B (CONT'D)

| No. | Description | Qty | Type(s) |
|--------|-----------------|-----|---------|
| *D601 | Spring | 1 | |
| *D602 | Spring, Blade | 1 | |
| *D603 | Roller | 1 | |
| D604 | Pin, Elastic | 1 | |
| *D605 | Pin, Elastic | 1 | |
| D606 | Pin, Elastic | 1 | |
| D607 | Pin, Elastic | 1 | |
| *D608 | Handle, Control | 1 | |
| *D609 | Board, Pull | 1 | |
| D610A | Handle | 1 | A |
| *D610B | Handle | 1 | B |
| D611 | Screw | 3 | |
| *D612 | Chain | 1 | |
| *D613 | Pin | 1 | |
| *D614 | Bolt, Adjusting | 1 | |
| *D615 | Nut, Adjusting | 1 | |
| D616 | Washer, Elastic | 3 | |

*Asterisk = Available in Kit (See List of Assemblies Parts List)

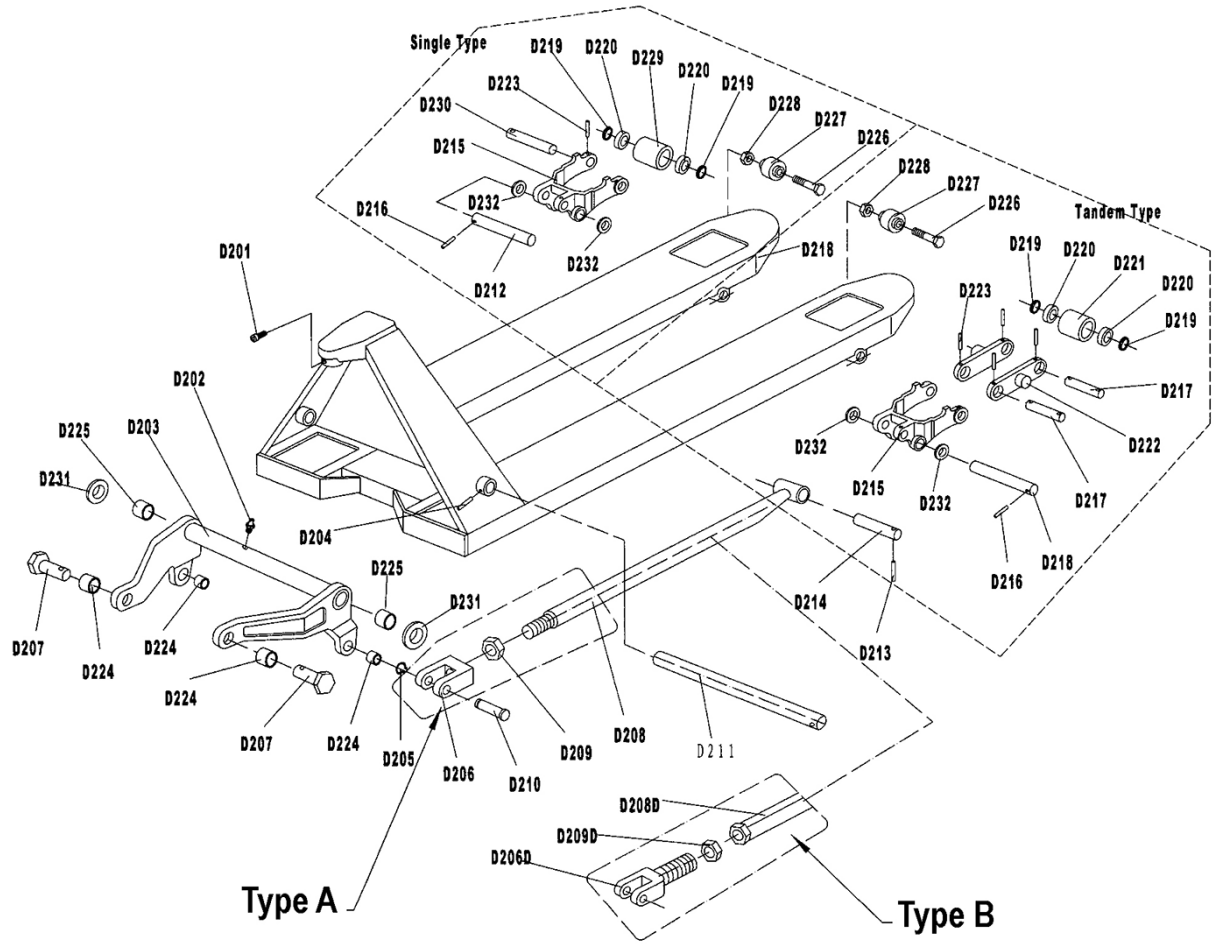
HANDLE ASSEMBLY, TYPE D



HANDLE ASSEMBLY, TYPE D (CONT'D)

| No. | Description | Qty | Type(s) |
|--------|-----------------|-----|---------|
| D601S | Spring | 1 | D |
| D602S | Ball, Steel | 1 | D |
| D603S | Cover | 1 | D |
| D604S | Screw | 4 | D |
| D605S | Pin | 4 | D |
| D606S | Pin | 1 | D |
| D607S | Pin, Elastic | 1 | D |
| D608S | Handle, Control | 1 | D |
| D609S | Board, Pull | 1 | D |
| D610S | Handle | 1 | D |
| D610AS | Bar, Draw | 1 | D |
| D611 | Screw | 3 | |
| D612 | Chain | 1 | |
| D613 | Pin | 1 | |
| D614 | Bolt, Adjusting | 1 | |
| D615 | Nut, Adjusting | 1 | |
| D616 | Washer, Elastic | 3 | |

FORK FRAME ASSEMBLY

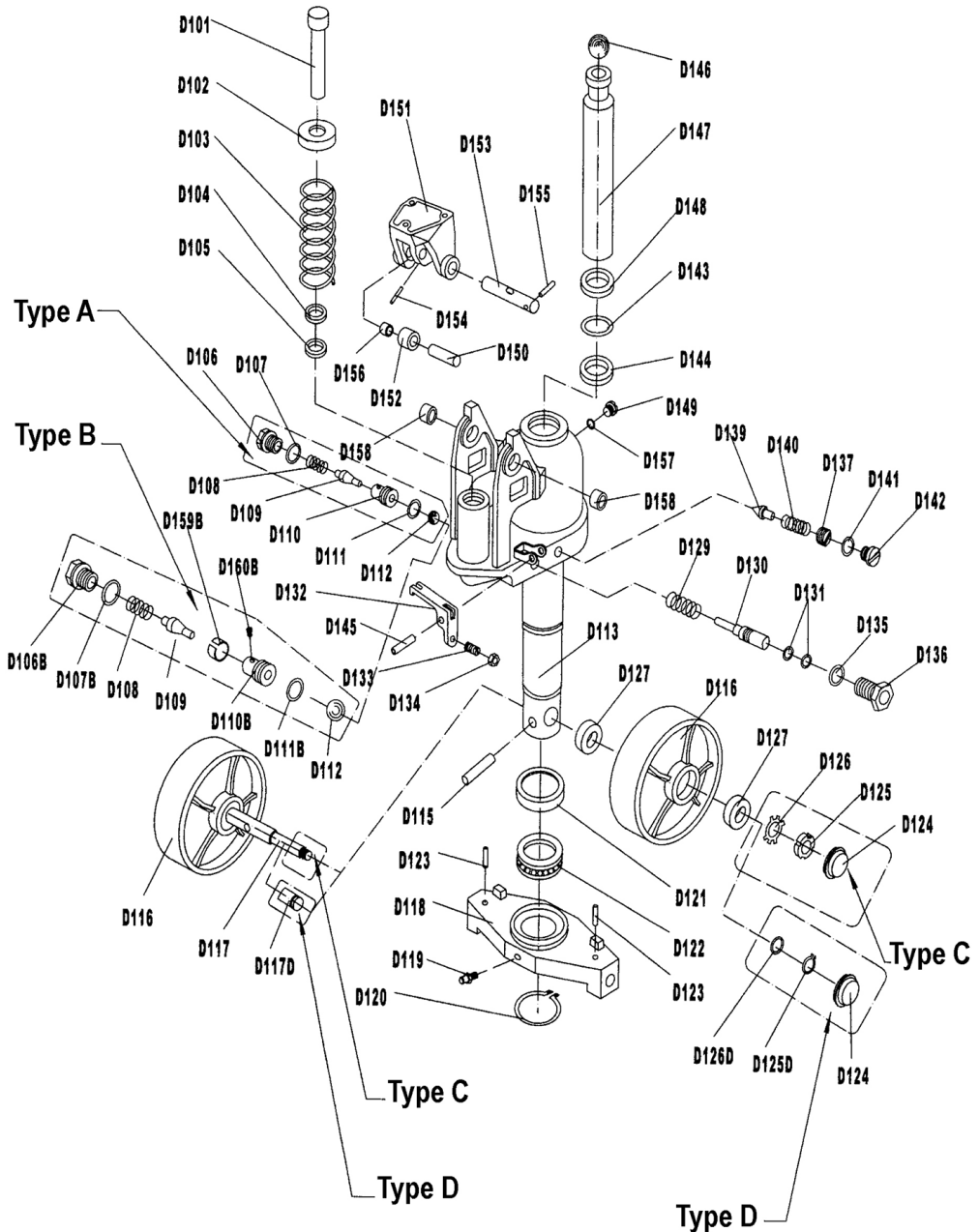


FORK FRAME ASSEMBLY (CONT'D)

| No. | Description | Qty | Type(s) |
|-------|-----------------|--------|--------------|
| D201 | Screw | 1 | |
| D202 | Holder, Oil | 1 | |
| D203 | Arm, Rock | 1 | |
| D204 | Pin, Elastic | 1 | |
| D205 | Ring, Retaining | 2 | |
| D206 | Joint | 2 | A |
| D206D | Joint | 2 | B |
| D207 | Shaft | 2 | |
| D208 | Rod, Pushing | 2 | A |
| D208D | Rod, Pushing | 2 | B |
| D209 | Nut | 2 | A |
| D209D | Nut | 2 | B |
| D210 | Pin | 2 | |
| D211 | Shaft | 1 | |
| D212 | Shaft | 2 | |
| D213 | Pin, Elastic | 2 | |
| D214 | Shaft | 2 | |
| D215 | Roller, Frame | 2 | |
| D216 | Pin, Elastic | 2 | |
| D217 | Roller, Frame | 4 | Tandem Wheel |
| D218 | Frame, Fork | 1 | |
| D219 | Washer | 8 or 4 | |
| *D220 | Bearing | 8 or 4 | |
| *D221 | Roller, Loading | 4 | Tandem Wheel |
| D222 | Plate, Linking | 4 | Tandem Wheel |
| D223 | Pin, Elastic | 8 or 2 | |
| D224 | Bushing | 4 | |
| D225 | Bushing | 2 | |
| D226 | Bolt | 2 | |
| D227 | Roller, Enter | 2 | |
| D228 | Nut | 2 | |
| *D229 | Roller, Loading | 2 | Single Wheel |
| D230 | Roller, Shaft | 2 | Single Wheel |
| D231 | Washer | 2 | |
| D232 | Washer | 4 | |

*Asterisk = Part of Assembly DF20-04 (See List of Assemblies Parts List)

PUMP UNIT ASSEMBLY



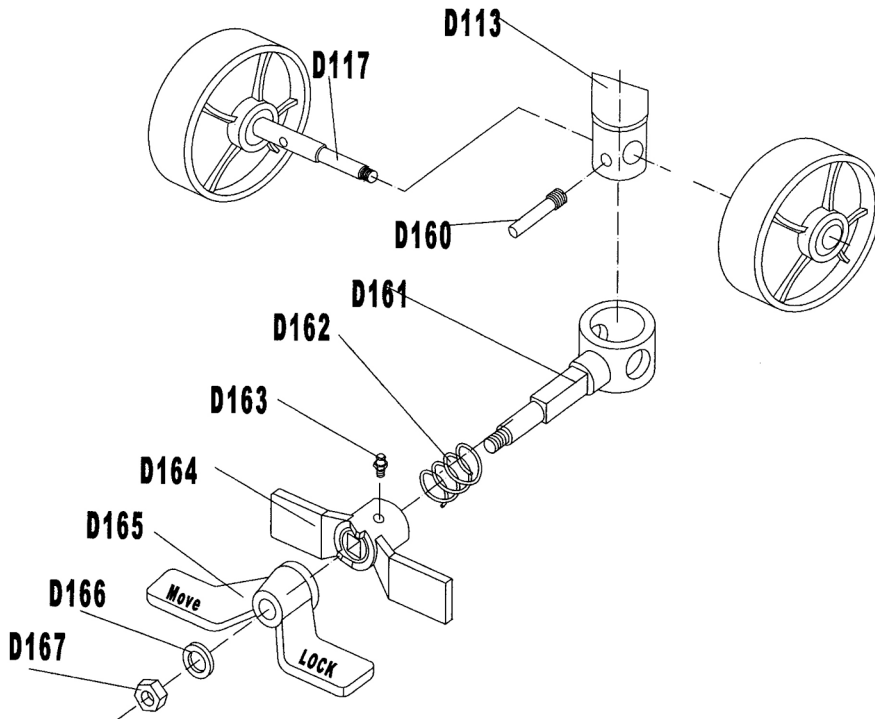
PUMP UNIT ASSEMBLY (CONT'D)

| No. | Description | Qty | Type(s) |
|--------|------------------------|-----|---------|
| *D101 | Rod, Pump Piston | 1 | |
| *D102 | Washer | 1 | |
| *D103 | Spring | 1 | |
| *D104 | Ring, Dust | 1 | |
| *D105 | Seal, Y | 1 | |
| D106 | Screw | 1 | A |
| *D106B | Screw | 1 | B |
| D107 | O-Ring | 1 | A |
| *D107B | O-Ring | 1 | B |
| *D108 | Spring | 1 | |
| *D109 | Valve, Pumping Spindle | 1 | |
| D110 | Valve, Pumping Seat | 1 | A |
| *D110B | Valve, Pumping Seat | 1 | B |
| D111 | O-Ring | 1 | A |
| *D111B | O-Ring | 1 | B |
| *D112 | Ball, Steel | 1 | |
| *D113 | Pump, Base | 1 | |
| D115 | Pin, Elastic | 1 | |
| *D116 | Wheel, Steering | 2 | |
| D117 | Wheel, Steering Shaft | 1 | C and D |
| D118 | Plate, Thrust | 1 | |
| D119 | Holder, Oil | 1 | |
| D120 | Ring, Retaining | 1 | |
| D121 | Bearing, Cover | 1 | |
| D122 | Bearing | 1 | |
| D123 | Pin, Elastic | 2 | |
| D124 | Cover, Dust | 2 | |
| D125 | Nut, Round | 2 | C and D |
| D126 | Washer, Tab | 2 | C and D |
| *D127 | Bearing | 4 | |
| *D129 | Spring | 1 | |
| *D130 | Pin, Strike | 1 | |

| No. | Description | Qty | Type(s) |
|--------|-----------------------|-----|---------|
| *D131 | O-Ring | 2 | |
| *D132 | Plate, Lever | 1 | |
| *D133 | Screw, Adjusting | 1 | |
| *D134 | Nut | 1 | |
| *D135 | O-Ring | 1 | |
| *D136 | Sleeve, Axle | 1 | |
| *D137 | Bolt, Adjusting | 1 | |
| *D139 | Valve, Safety Spindle | 1 | |
| *D140 | Spring | 1 | |
| *D141 | O-Ring | 1 | |
| *D142 | Screw | 1 | |
| *D143 | O-Ring | 1 | |
| *D144 | Seal, Y | 1 | |
| *D145 | Pin, Elastic | 1 | |
| *D146 | Ball, Steel | 1 | |
| *D147 | Rod, Piston | 1 | |
| *D148 | Ring, Dust | 1 | |
| *D149 | Screw | 1 | |
| *D150 | Shaft | 1 | |
| *D151 | Bracket | 1 | |
| *D152 | Roller, Pressure | 1 | |
| *D153 | Shaft | 1 | |
| *D154 | Pin, Elastic | 1 | |
| *D155 | Pin, Elastic | 1 | |
| *D156 | Bushing | 1 | |
| *D157 | Washer, Seal | 1 | |
| *D158 | Bushing | 2 | |
| *D159B | Sleeve | 1 | B |
| *D160B | Screw | 1 | B |

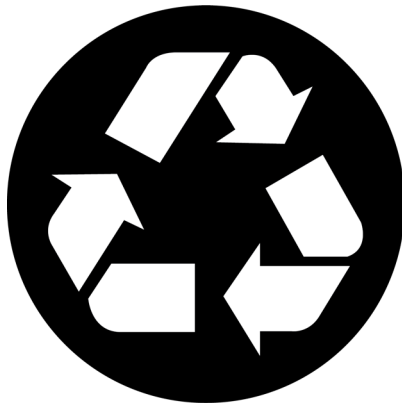
*Asterisk = Available in Kit (See List of Assemblies Parts List)

FOOT BRAKE (OPTIONAL)



| No. | Description | Qty |
|------|-----------------------|-----|
| D113 | Pump, Body | 1 |
| D117 | Wheel, Steering Shaft | 1 |
| D160 | Pin | 1 |
| D161 | Sleeve, Holding | 1 |
| D162 | Spring | 1 |
| D163 | Holder, Oil | 1 |
| D164 | Plate, Brake | 1 |
| D165 | Pedal | 1 |
| D166 | Washer | 1 |
| D167 | Nut | 1 |

RECYCLE YOUR OLD LIFT-RITE PARTS



| | |
|-----------------------|---|
| Chassis | Steel |
| Roller suspension | Steel and cast iron |
| Bushings | Brass |
| Grease fittings | Steel |
| Rollers | Steel |
| Hydraulic body | Cast iron |
| Thrust plate | Cast iron |
| Handle | Steel |
| Wheel | Steel |
| Bushings | Brass |
| Hydraulic oil | Disposal in accordance with local regulations |
| Assembly parts | Steel, brass, nylon |

HAND PALLET TRUCK WARRANTY

The Altra Hand Pallet Truck, is warranted against defects in materials and workmanship for a period of twelve (12) months for hydraulics and chassis, and three (3) months for wearables from date of installation.

Components found to be defective by an authorized Lift-Rite Sales and Service Center during the warranty period will be replaced or repaired as indicated above. Replacement components installed during the defined period set forth above, are warranted for the balance of the applicable truck warranty period, or 90 days, whichever is longer. Additionally, freight charges for parts involved in the replacement or repair of a defective component will be paid by Lift-Rite, provided that the replacement or repair is made by an authorized Lift-Rite Sales and Service Center. Labor or miscellaneous costs involved in the replacement of any components determined to be defective are not covered. Local taxes, if any, are excluded.

This warranty is void in the event of defects or damage caused by misuse, abuse, or accident. Any truck used under adverse conditions, such as fish, meat, or poultry processing plants, tanneries, freezer applications, or any other application where the unit is operating in water or subjected to fluid or chemicals is NOT covered under any warranty.

This warranty does not cover oil leaks, adjustments, or loose hardware.

Lift-Rite reserves the right to make changes and improvements in design without making changes to previously manufactured vehicles.

Notwithstanding any other language contained herein, this warranty is expressly voided without any further notice if any modification is made to the Lift-Rite equipment, or if additional components or devices are added to the Lift-Rite equipment, without prior approval having been granted in writing by Lift-Rite.

THIS WARRANTY IS IN LIEU OF ALL OTHER WARRANTIES, EXPRESSED, IMPLIED, OR STATUTORY. THERE ARE NO WARRANTIES OF MERCHANTABILITY OR FITNESS FOR A PARTICULAR PURPOSE. In no event shall Lift-Rite be liable for incidental, special, or consequential damages.

SELECTED OSHA REGULATIONS FOR LIFT TRUCKS

Note: Some or all of the following may not be applicable to your hand pallet lift truck.

The use of forklift trucks in the workplace is governed by various regulations. In the United States, the Federal Occupational Safety and Health Administration (OSHA) has issued regulations which cover the majority of workplaces.

In addition, several states have implemented regulations which apply instead of the Federal regulations.

Check with your local OSHA office or provincial Labor Bureau to confirm which regulations govern your workplace.

Because of their wide applicability, this section of your manual lists several parts of the Federal OSHA regulations that might be of particular importance to your workplace.

The full text of the Federal regulations can be found in the Code of Federal Regulations at 29 CFR Section 1910.178.

The following citations are followed by a reference to the appropriate subparagraph of the regulations.

- Modifications and additions which affect capacity and safe operation shall not be performed by the customer or user without manufacturers prior written approval. Capacity, operation and maintenance instruction plates, tags or decals shall be changed accordingly. (a) (3)
- The user shall see that all nameplates and markings are in place and are maintained in a legible condition. (a) (6)
- The employer shall ensure that each powered industrial truck operator is competent to operate a powered industrial truck safely, as demonstrated by the successful completion of the training and evaluation specified in this paragraph. (l) (1) (i)
- Prior to permitting an employee to operate a powered industrial truck (except for training purposes), the employer shall ensure that each operator has successfully completed the training required by this paragraph. (l) (1) (ii)
- Trainees may operate a powered industrial truck only under the direct supervision of persons who have the knowledge, training, and experience to train operators and evaluate their competence and where such operation does not endanger the trainee or other employees. (l) (2) (i) (A) (B)
- Training shall consist of a combination of formal instruction (e.g. lecture, discussion, interactive computer learning, videotape, written material), practical training (demonstrations performed by the trainer and practical exercises performed by the trainee), and evaluation of the operator's performance in the workplace. (l) (2) (B) (ii) [Editorial Note: For required training program content, refer to (l) (3) (i) (A-M) and (l) (3) (ii) (A-I).]
- Refresher training, including an evaluation of the effectiveness of that training, shall be conducted as required by paragraph (l) (4) (ii) to ensure that the operator has the knowledge and skills needed to operate the powered industrial truck safely. (l) (4) (i)
- An evaluation of each powered industrial truck operator's performance shall be conducted at least once every three years. (l) (4) (iii)
- The employer shall certify that each operator has been trained and evaluated as required by this paragraph (l). The certification shall include the name of the operator, the date of the training, the date of the evaluation, and the identity of the person(s) performing the training or evaluation. (l) (6)
- The employer shall prohibit arms or legs from being placed between the uprights of the mast or outside the running lines of the truck. (m) (4)
- Brakes shall be set and wheel blocks shall be in place to prevent movement of trucks, trailers or railroad cars while loading or unloading. Fixed jacks may be necessary to support a semitrailer when the trailer is not coupled to a tractor. The flooring of trucks, trailers, and railroad cars shall be checked for breaks and weakness before they are driven onto. (m) (7)
- Only approved industrial trucks shall be used in hazardous locations. (m) (11)

- All traffic regulations shall be observed, including authorized plant speed limits. A safe distance shall be maintained approximately three truck lengths from the truck ahead, and the truck shall be kept under control at all times. (n) (1)
- The driver shall be required to slow down and sound the horn at cross aisles and other locations where vision is obstructed. If the load being carried obstructs forward view, the driver shall be required to travel with the load trailing. (n) (4)
- Under all travel conditions the truck shall be operated at a speed that permits it to be brought to a stop in a safe manner. (n) (8)
- Stunt driving and horseplay shall not be permitted. (n) (9)
- If at any time a powered industrial truck is found to be in need of repair, defective, or in any way unsafe, the truck shall be taken out of service until it has been restored to safe operating condition. (p) (1)
- Any power-operated industrial truck not in safe operating condition shall be removed from service. All repairs shall be made by authorized personnel. (q) (1)
- All parts of any such industrial truck requiring replacement shall be replaced only by parts equivalent as to safety with those used in the original design. (q) (5)
- Industrial trucks shall be examined before being placed in service, and shall not be placed in service if the examination shows any condition adversely affecting the safety of the truck. Such examination shall be made at least daily. Where powered industrial trucks are used on a round-the-clock basis, they shall be examined after each shift. Defects when found shall be immediately reported and corrected. (q) (7)

Part Kit Number

1247782

LIFTRITE®